

# Wigton

new foundations

housing association



5 bedroom detached house close to Wigton town centre.

# The accommodation

## Front lounge



## Dining Room



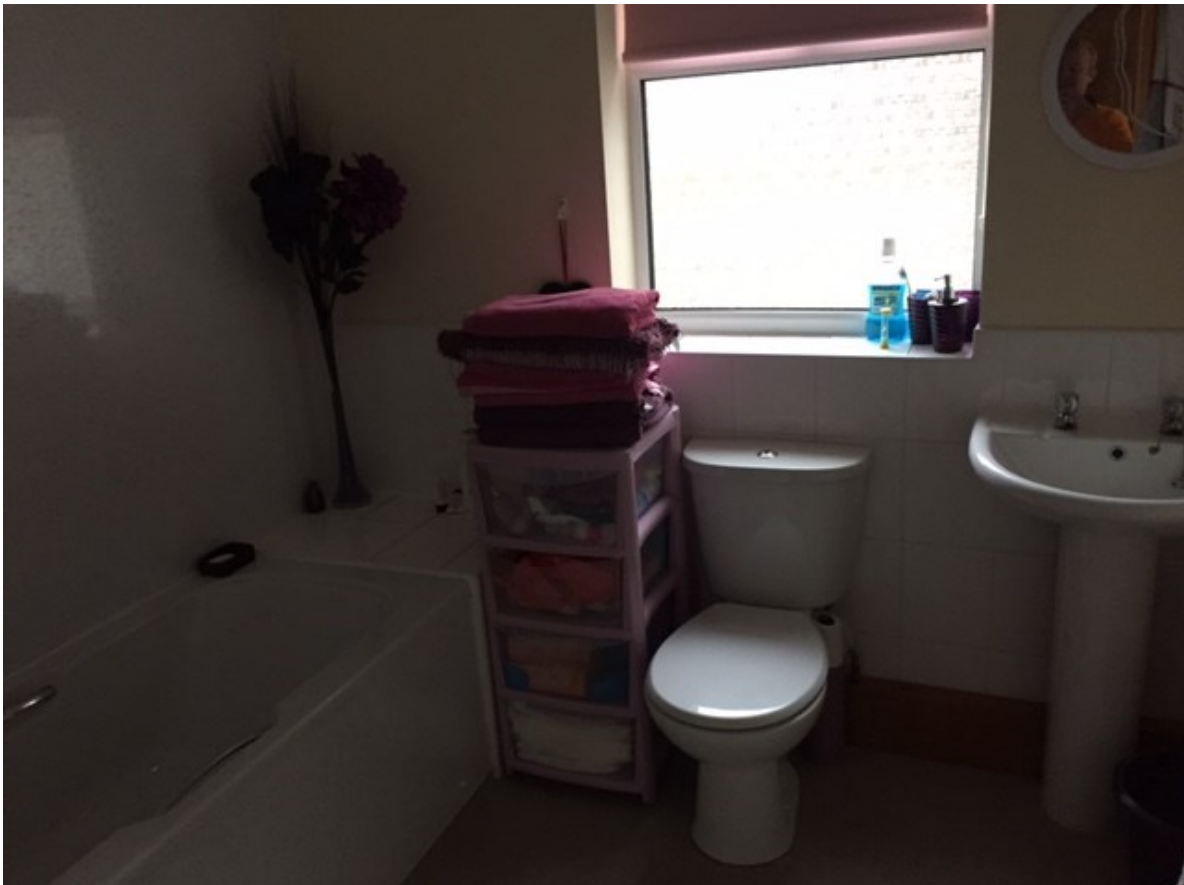
# Kitchen



## Kitchen



## Bathroom



## **General information**

This is a five bedroom detached property in a quiet residential area close to Wigton town centre.

### **Ground Floor**

Lounge with open access through to large kitchen, separate dining area, two double bedrooms, one of which ensuite, one single bedroom and two large communal bathrooms.

### **First Floor**

Landing

Bedroom One

Bedroom Two

Bathroom

### **External**

Good sized private side garden.

For further details and enquiries please contact

John Spencer

Senior Housing Manager

New Foundations Housing association

238 Burnley Rd East

Rosendale

BB4 9DQ

[john@newfoundations.co.uk](mailto:john@newfoundations.co.uk)

[www.newfoundations.co.uk](http://www.newfoundations.co.uk)

01706 835333