

Dale View,

Chorley

PR7 3QJ



Large, detached property set on a small cul de sac 10 minutes from Chorley town centre.

5 bedrooms.

Modern kitchen with breakfast bar, conservatory leading into large private garden.

The ground floor also has two bedrooms, wet room, separate downstairs WC.

First floor contains three bedrooms, one of which has a shower ensuite and one bathroom.

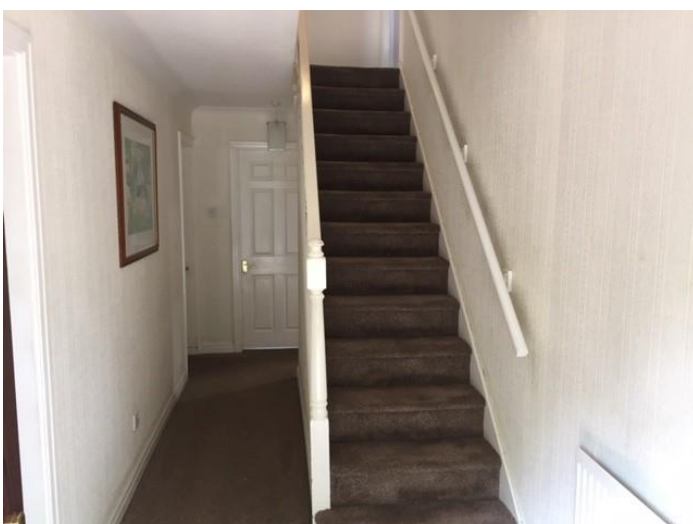
Back Garden



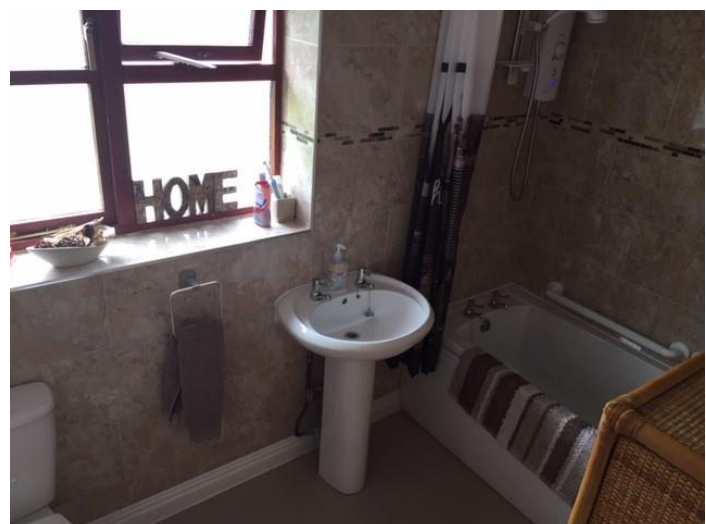
Front of House



Hallway



Bathroom



The Conservatory



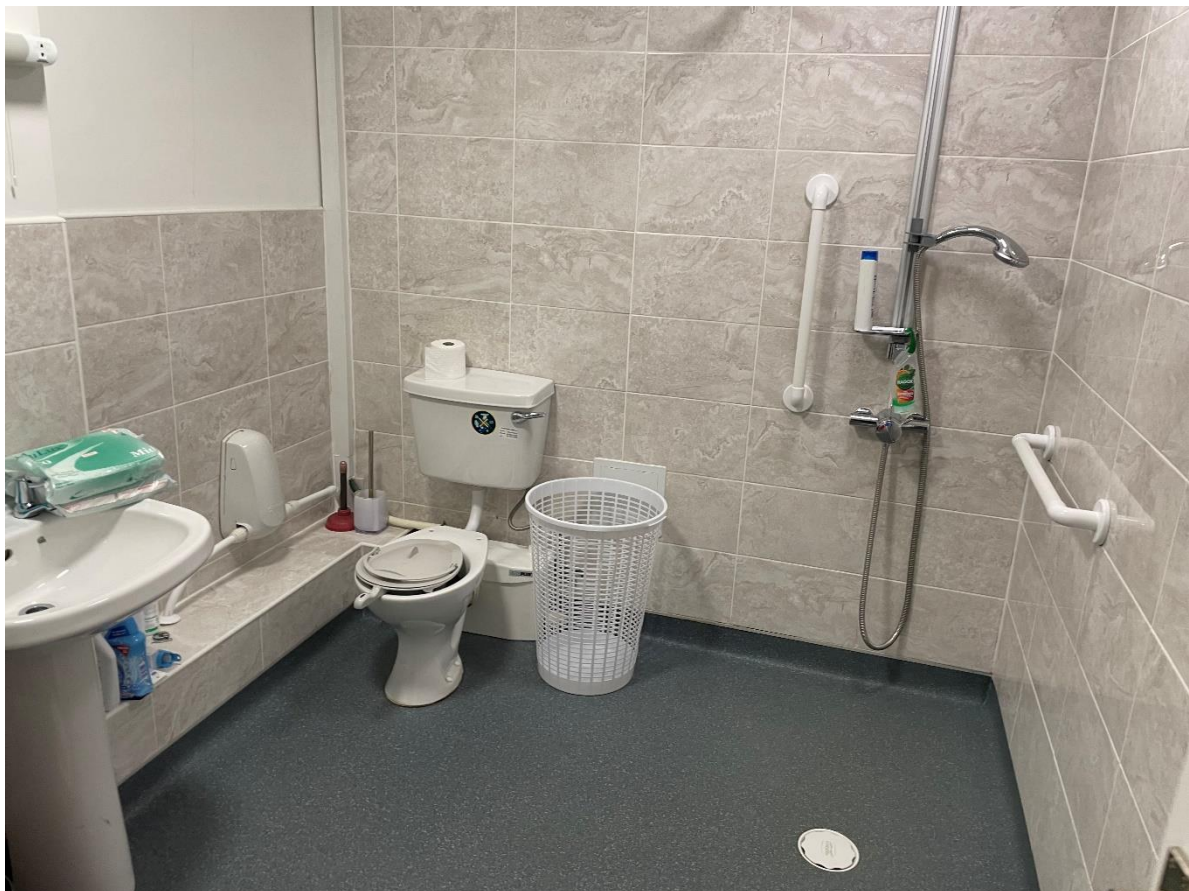
The Kitchen



The Lounge



The Wet Room



For further details and enquiries please contact:

New Foundations Housing association

238 Burnley Rd East

Rosendale

BB4 9DQ

john@newfoundations.co.uk

www.newfoundations.co.uk

01706 835333